

## PINCE POUR CHEVILLE INDEMOLL POUR FIXATION DANS MATÉRIAUX CREUX

PARAMETRES D'INSTALLATION		
Famille	Code	Dimensions
INPIN	NPINZANI	M4, M5 & M6

### MATÉRIAUX :



brique creuse

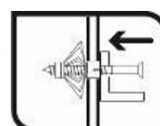
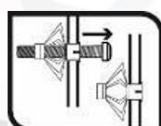
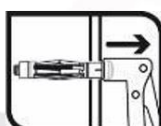
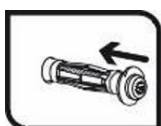
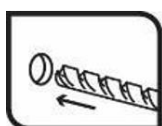


placo plâtre



béton creux

### INSTALLATION :



\* AUTRES DIMENSIONS NOUS CONTACTER [contact@visserie-sabf.fr](mailto:contact@visserie-sabf.fr) ou au [02.40.49.94.83](tel:02.40.49.94.83)